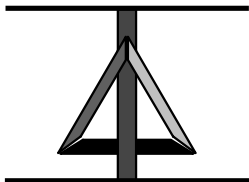


Data Model Patterns: A Metadata Map

East Coast Regional DAMA 2006

David C. Hay

May-June, 2006



Essential Strategies, Inc.

13 Hilshire Grove Lane, Houston, TX 77055

☎ (713) 464-8316

✉ dch@essentialstrategies.com

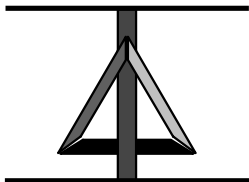
🌐 www.essentialstrategies.com

Network - any thing reticulated, or decussated, at equal distances, with interstices between the intersections.

Samuel Johnson

Dictionary of the English Language

Column 3: locations



Essential Strategies, Inc.

13 Hilshire Grove Lane, Houston, TX 77055

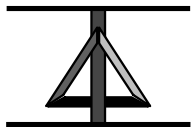
☎ (713) 464-8316

✉ dch@essentialstrategies.com

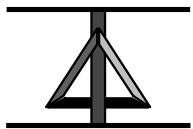
🌐 www.essentialstrategies.com

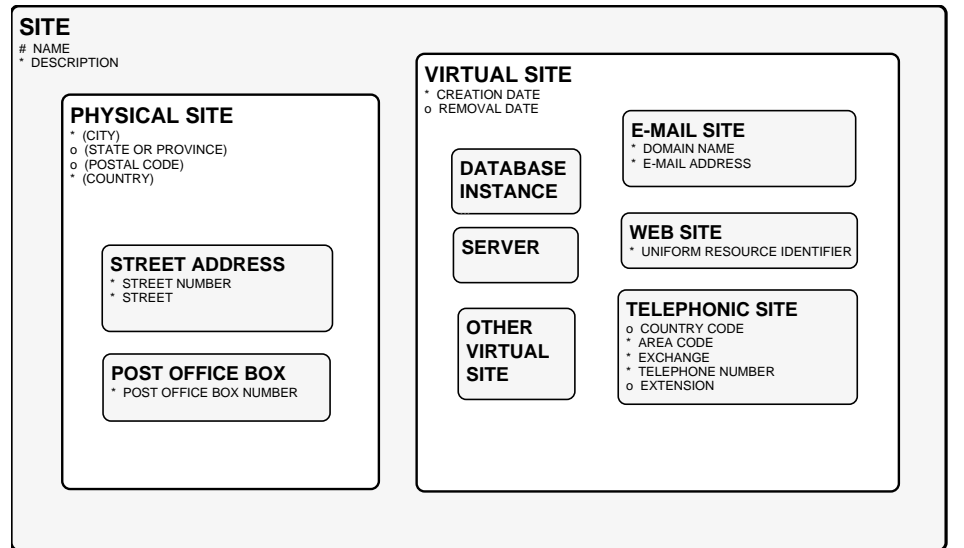
The Architecture Framework . . .

	<i>Data (What)</i>	<i>Activities (How)</i>	<i>Locations (Where)</i>	<i>People (Who)</i>	<i>Time (When)</i>	<i>Motivation (Why)</i>
Objectives / Scope (Planner's view)	List of things important to the enterprise 	List of processes the enterprise performs 	List of enterprise locations 	Organization approaches 	Business master schedule 	Business vision and mission
Enterprise model (Business Owners' Views)	Language, divergent data model 	Business process model 	Logistics network 	Organization chart 	State / transition diagram 	Business strategies, tactics, policies, rules
Model of Fundamental Concepts (Architect's View)	Convergent e/r model 	Essential data flow diagram 	Locations of roles 	The viable system, use cases 	Entity Life History 	Business rule model
Technology Model (Designer's View)	Data base design 	System design, program structure 	Hardware, software distribution 	User interface, security design 	Control structure 	Business rule design
Detailed Representation (Builder's View)	Physical storage design 	Detailed program design 	Network architecture, protocols 	Screens, security coding 	Timing definitions 	Rule specification program logic
Functioning System	<i>(Working System)</i>					
	Converted data	Executable programs	Communications facilities	Trained people	Business events	Enforced rules



From the Business model



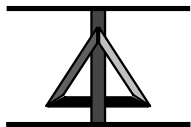


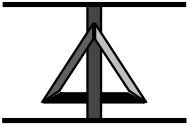
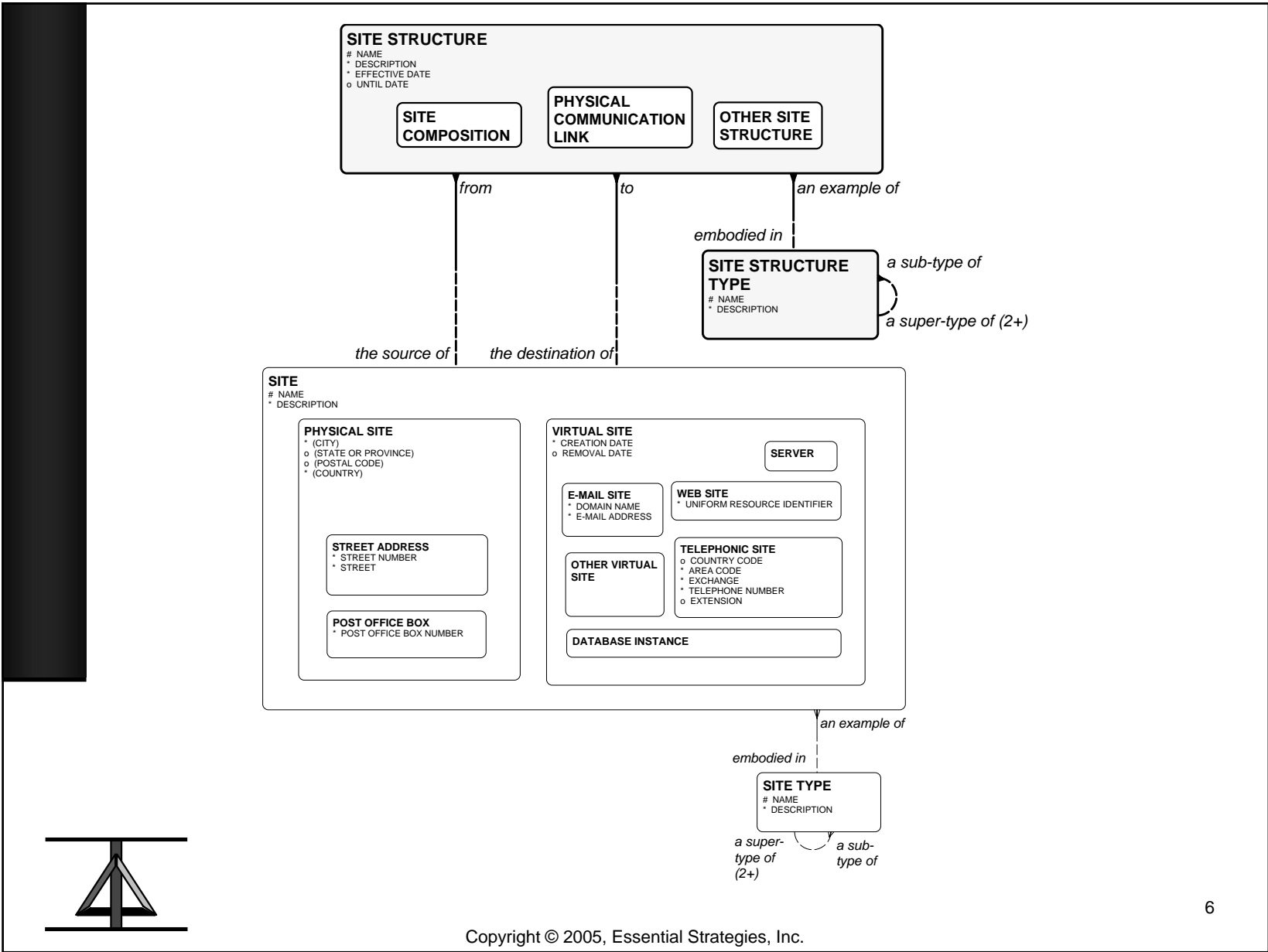
part of composed of an example of

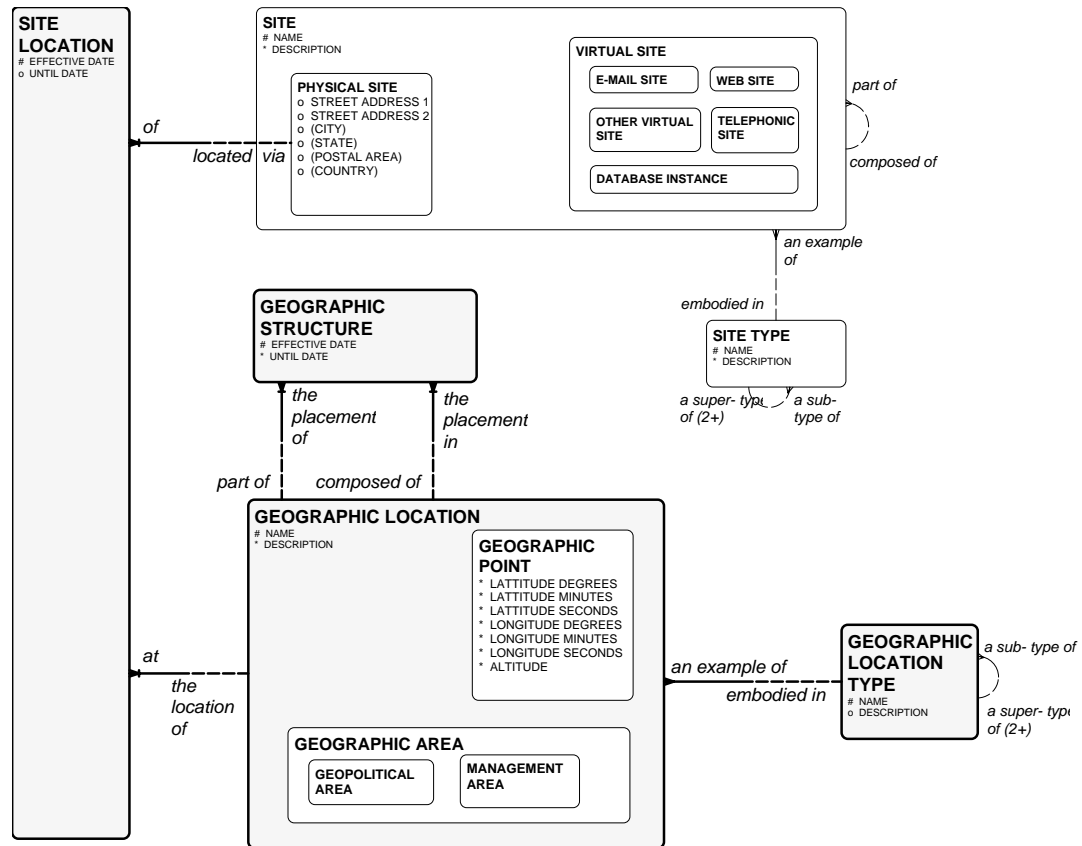
embodied in



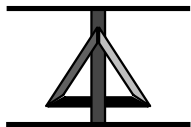
a super-type of (2+) a sub-type of

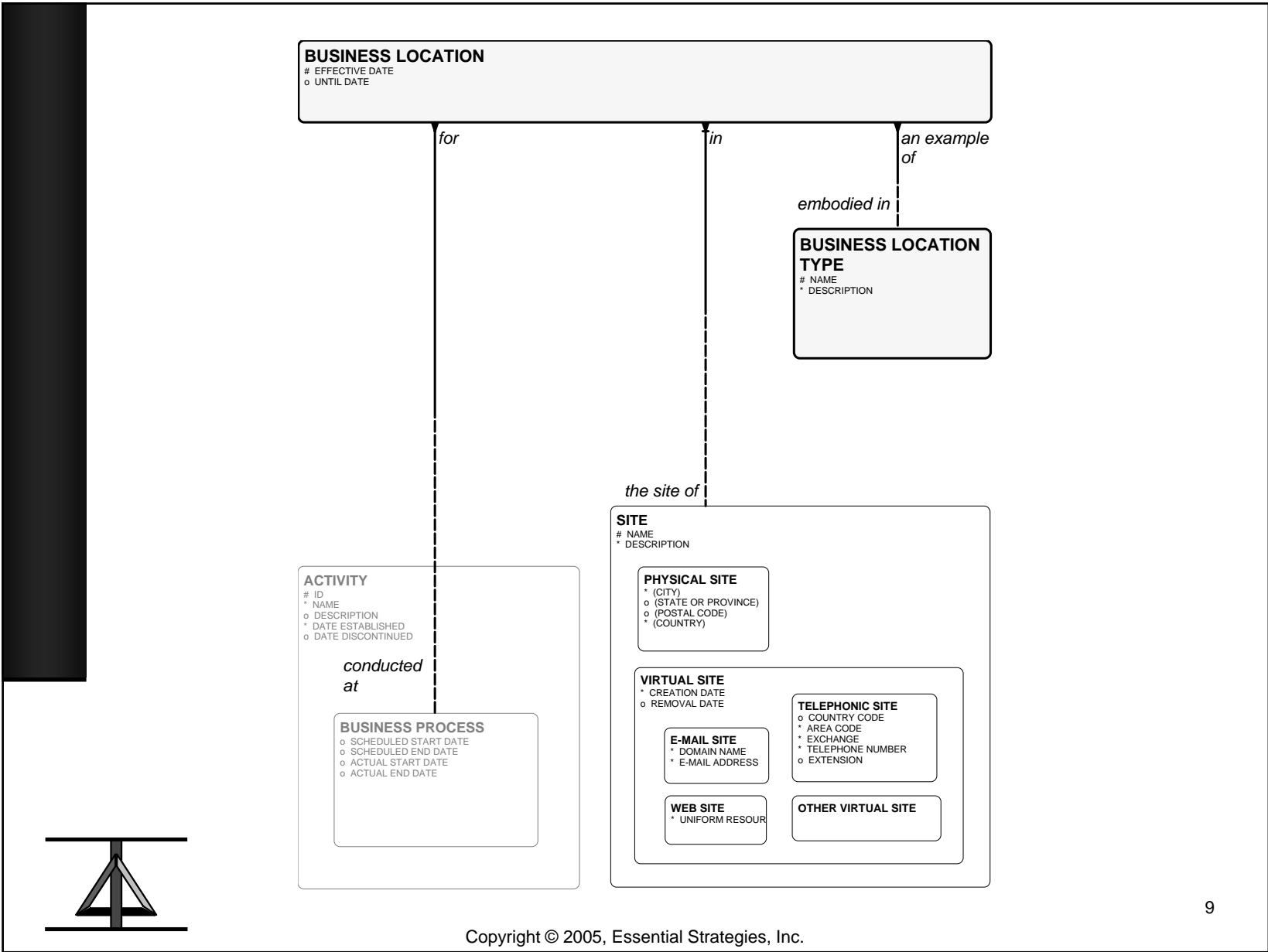


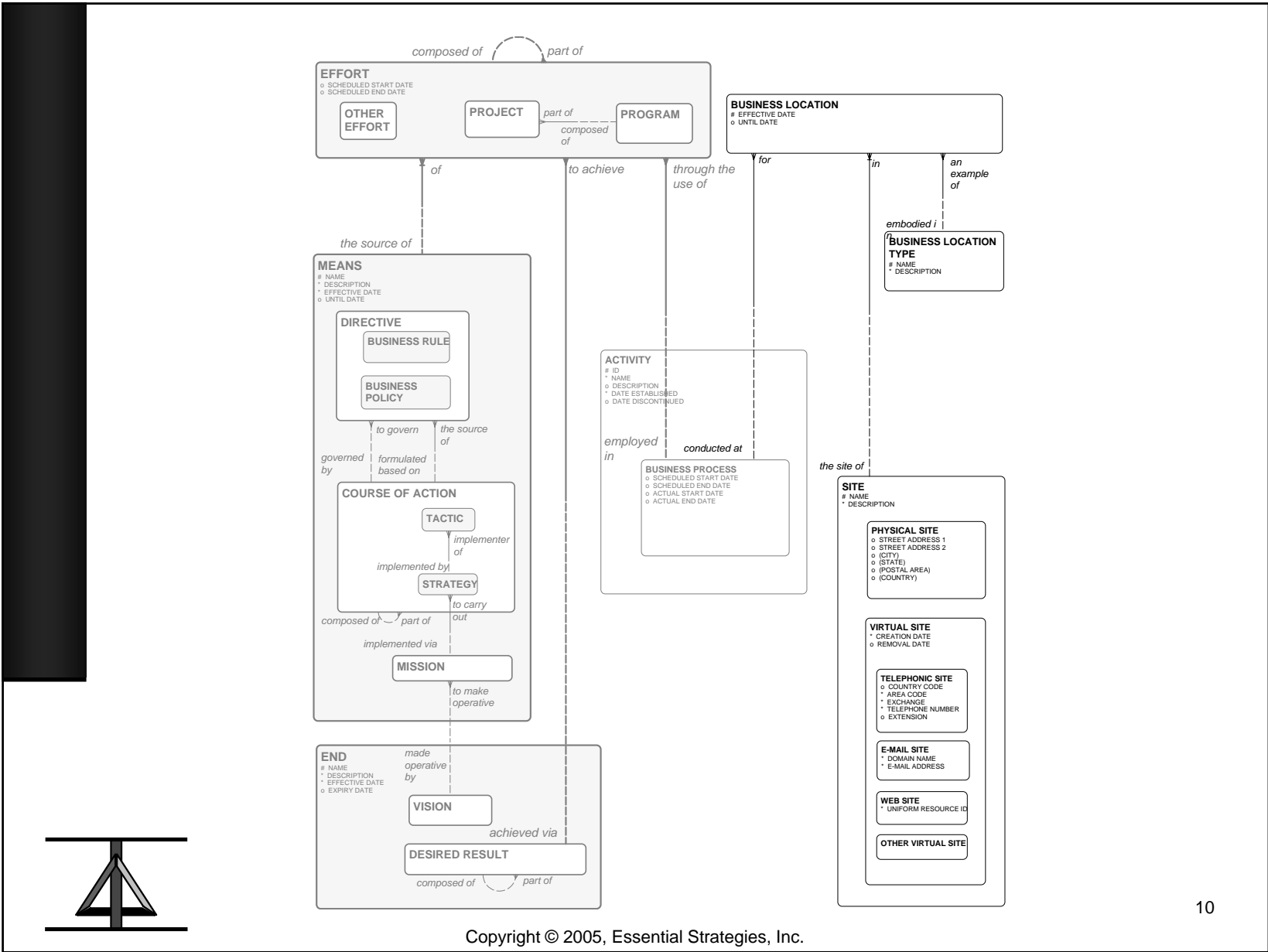


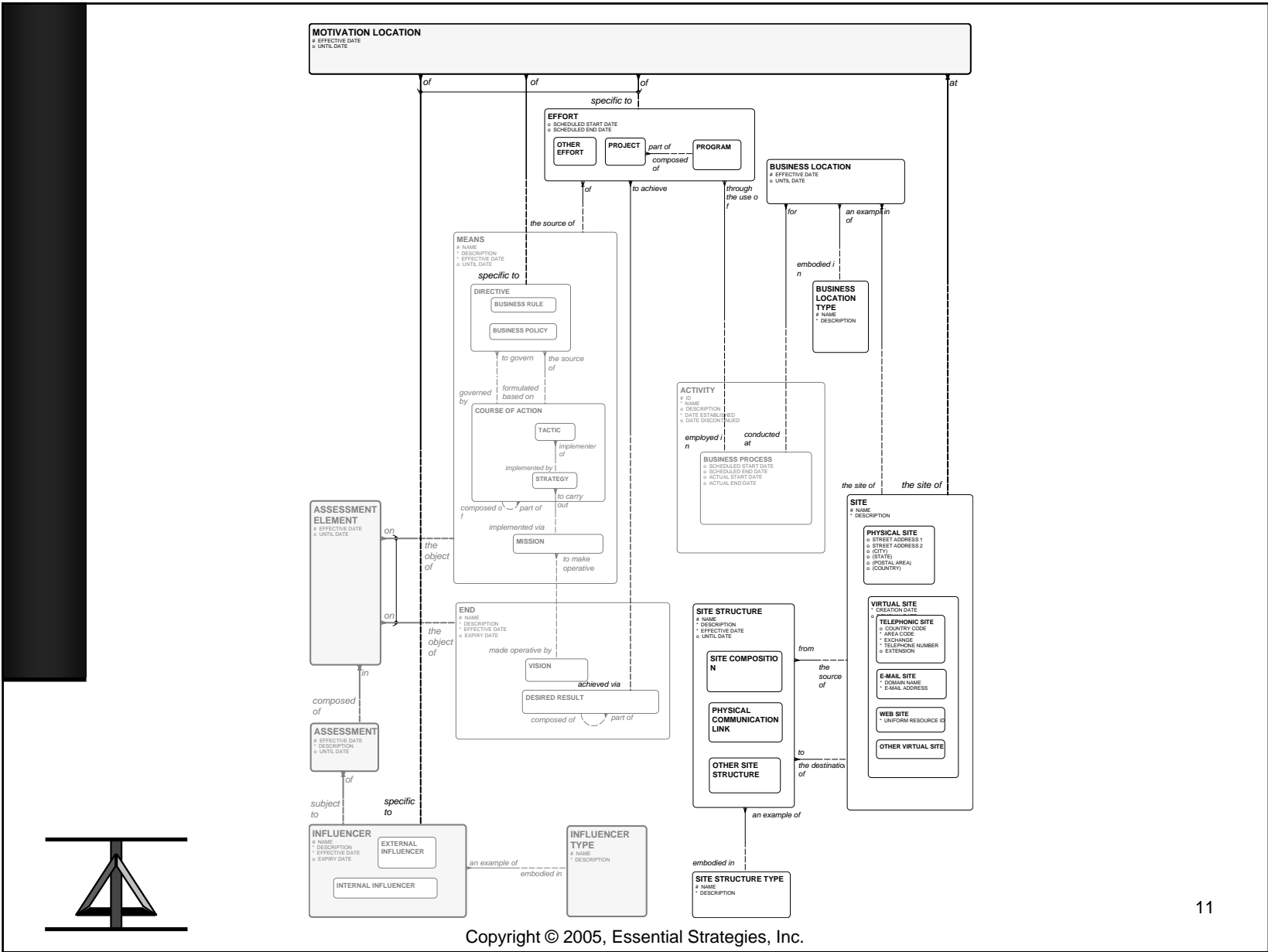


Row Two:
The business owner's View

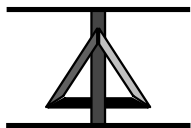




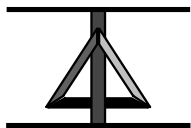


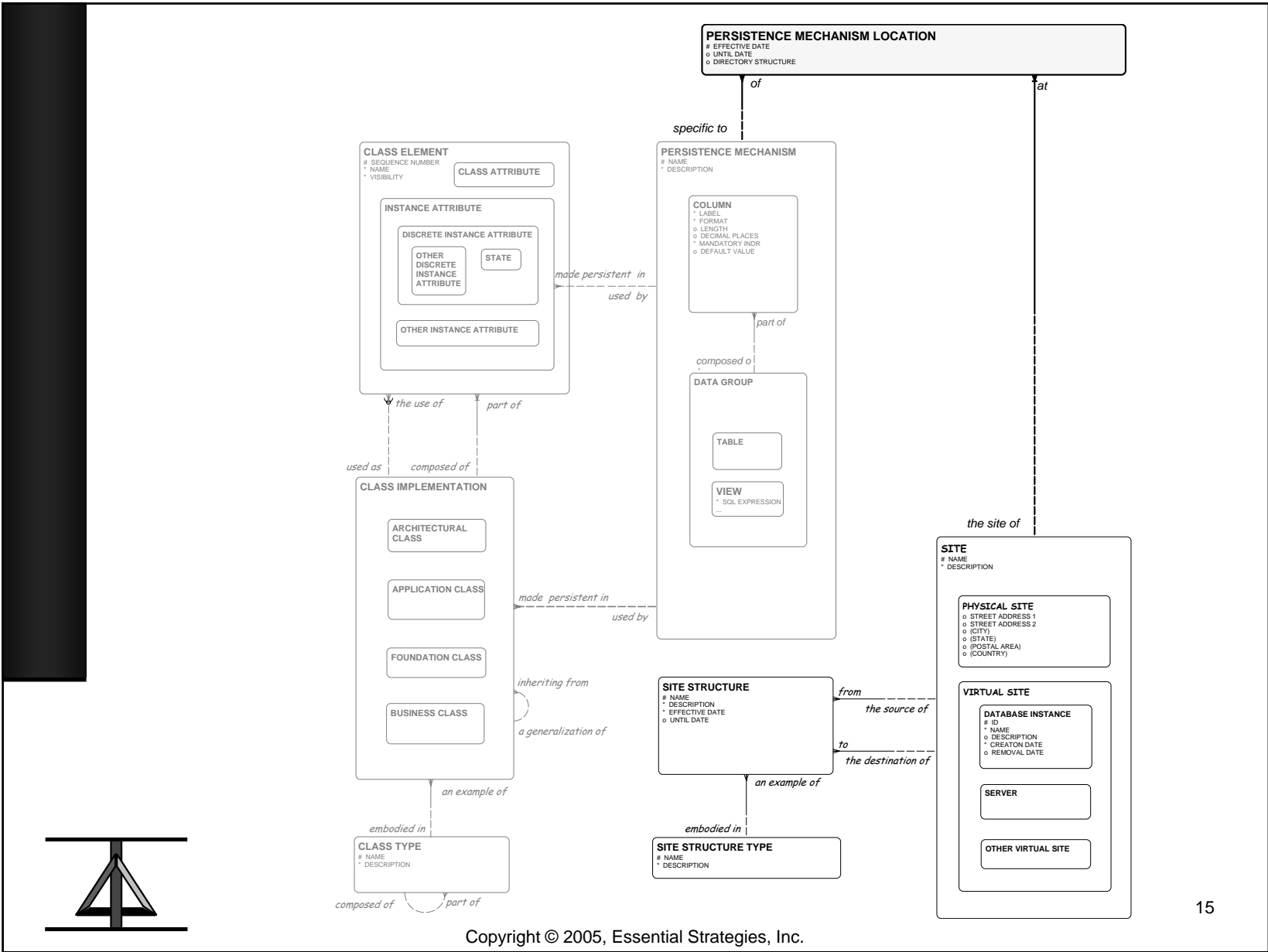


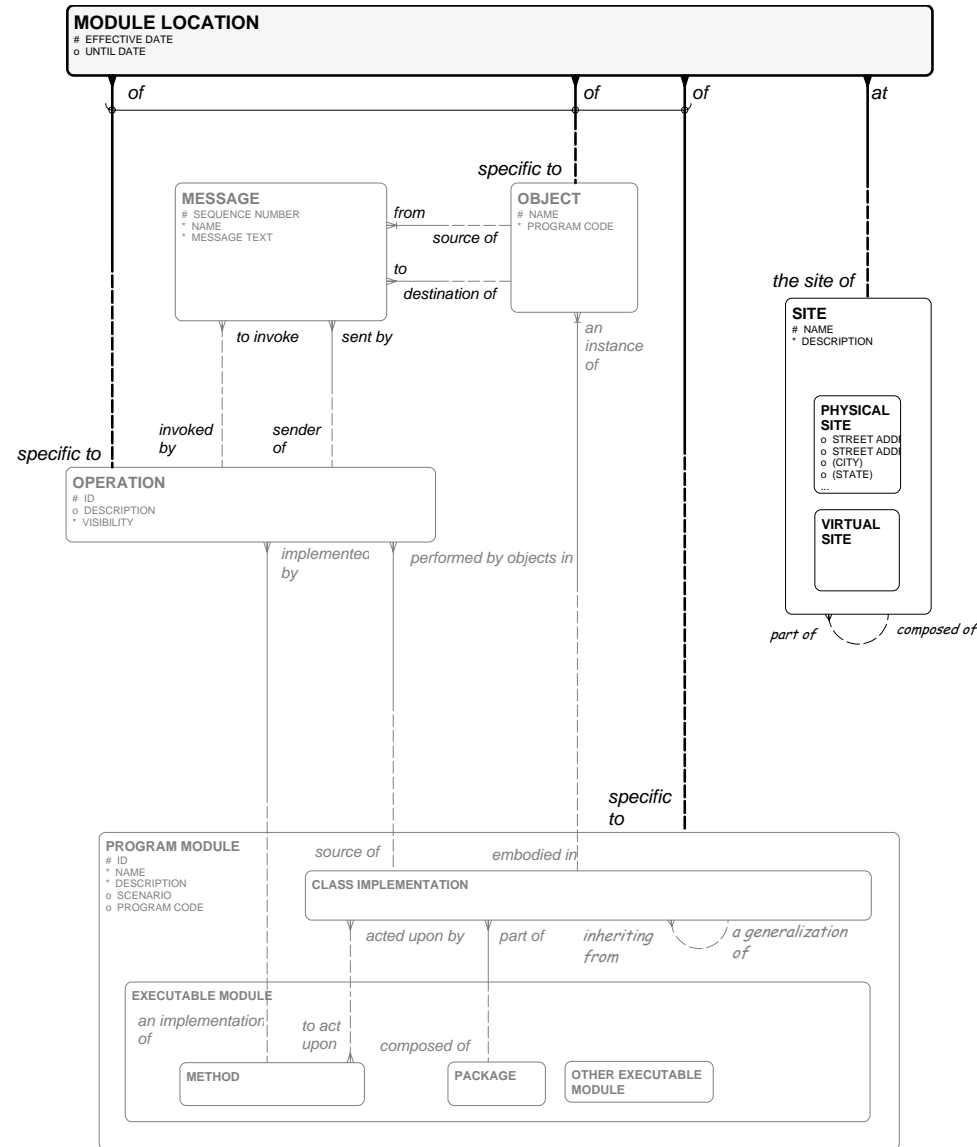
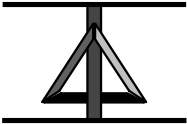
Row three:
The architect's View

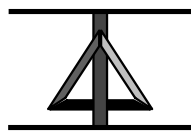
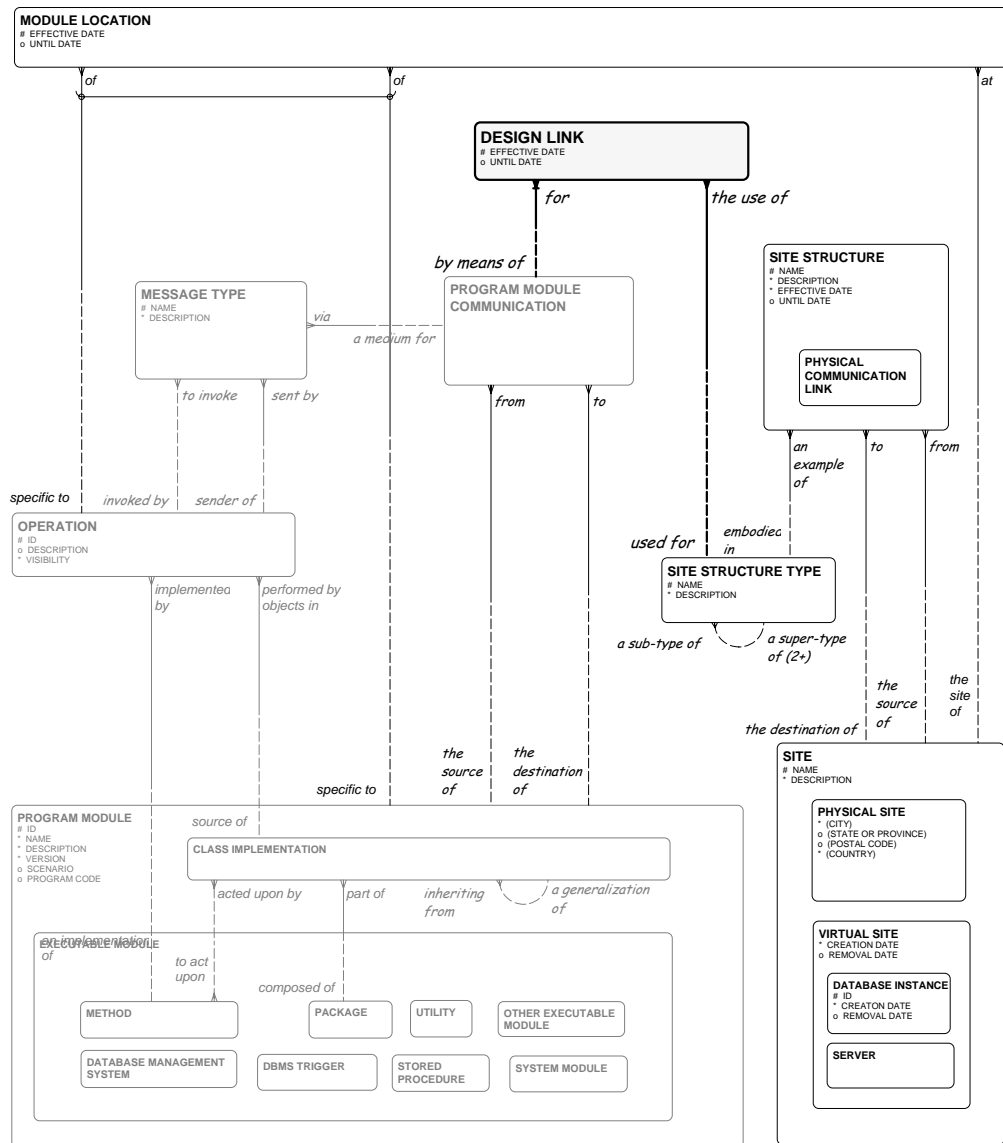


Row four:
The designer's View

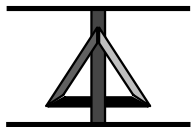


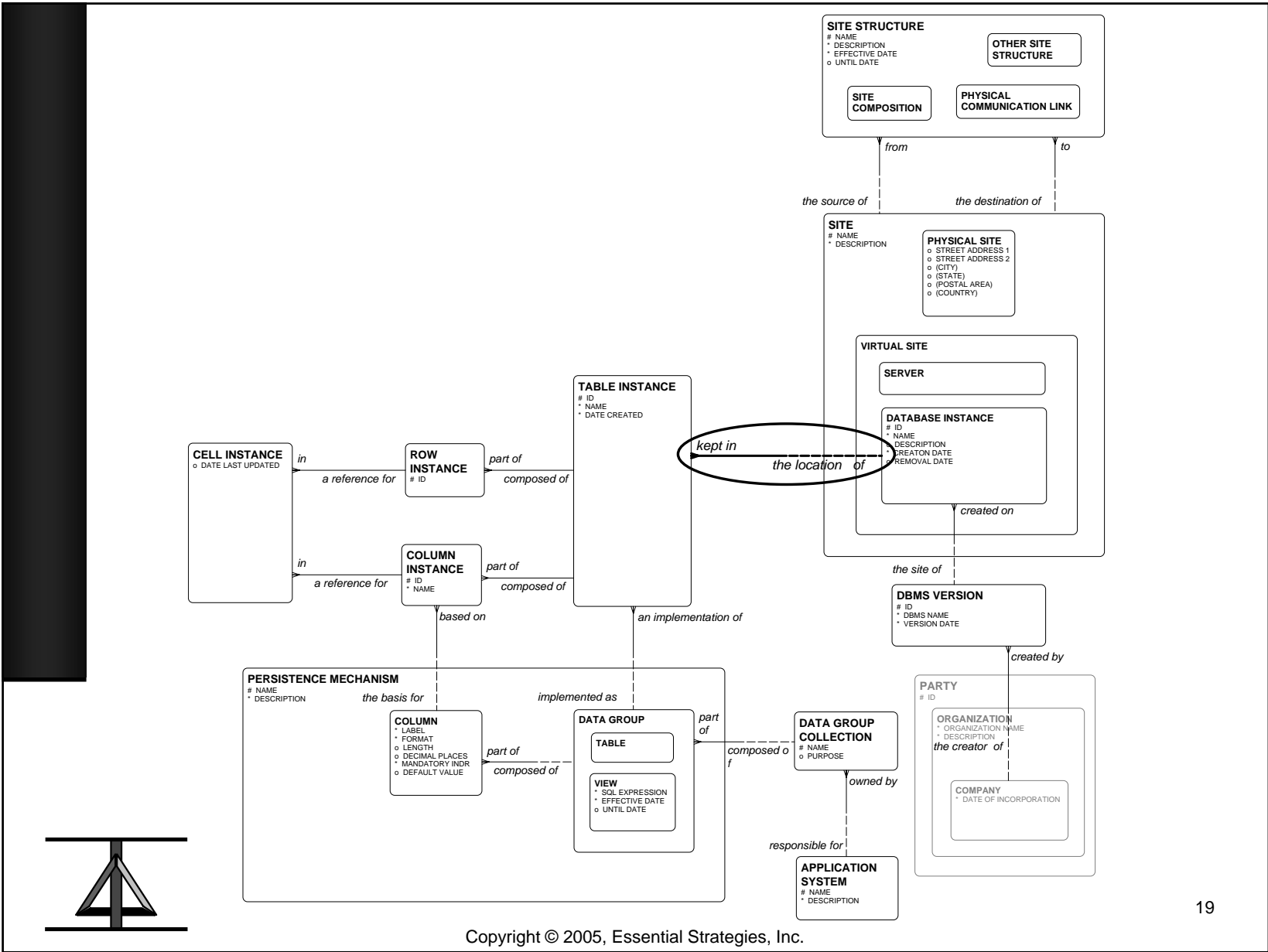


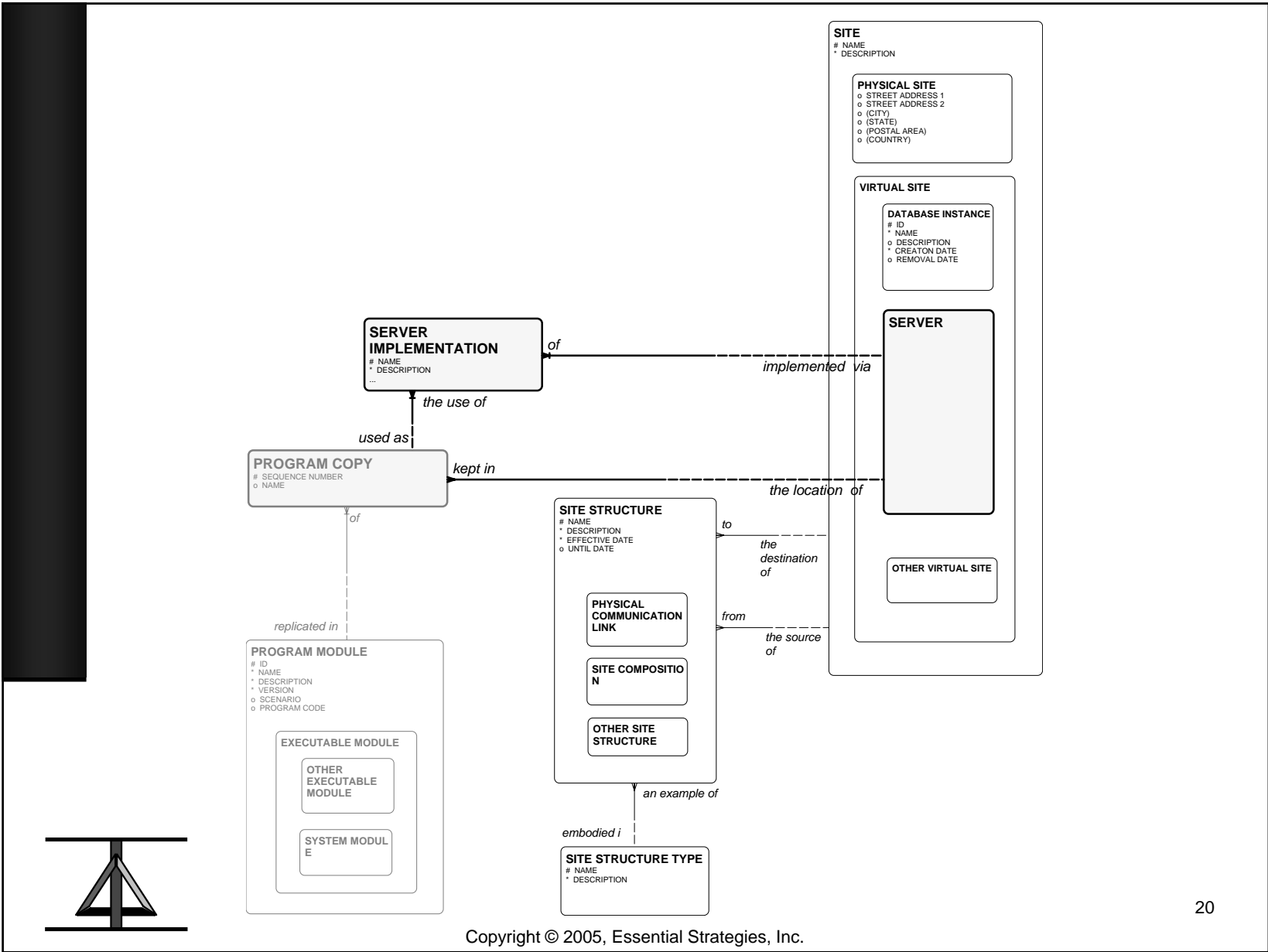


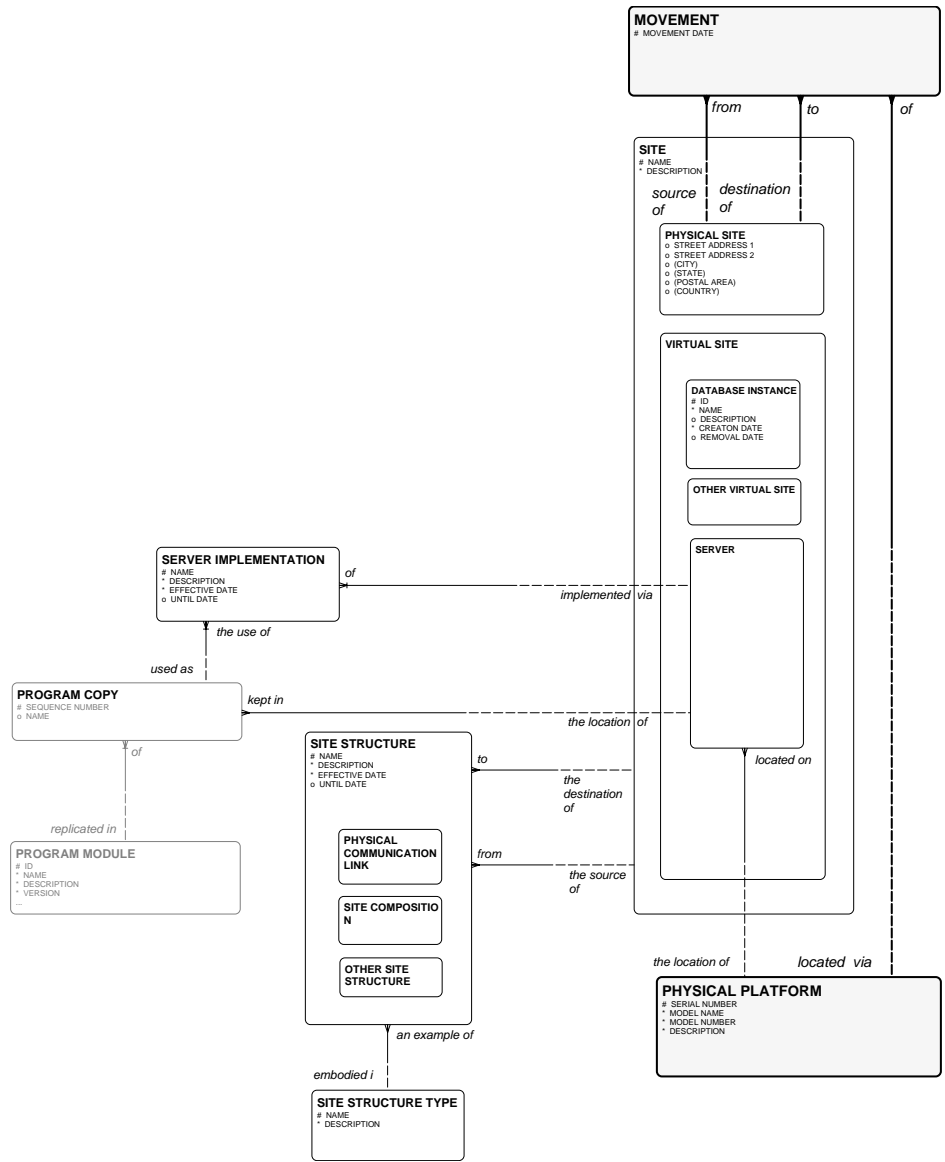
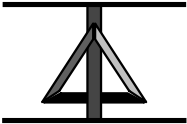


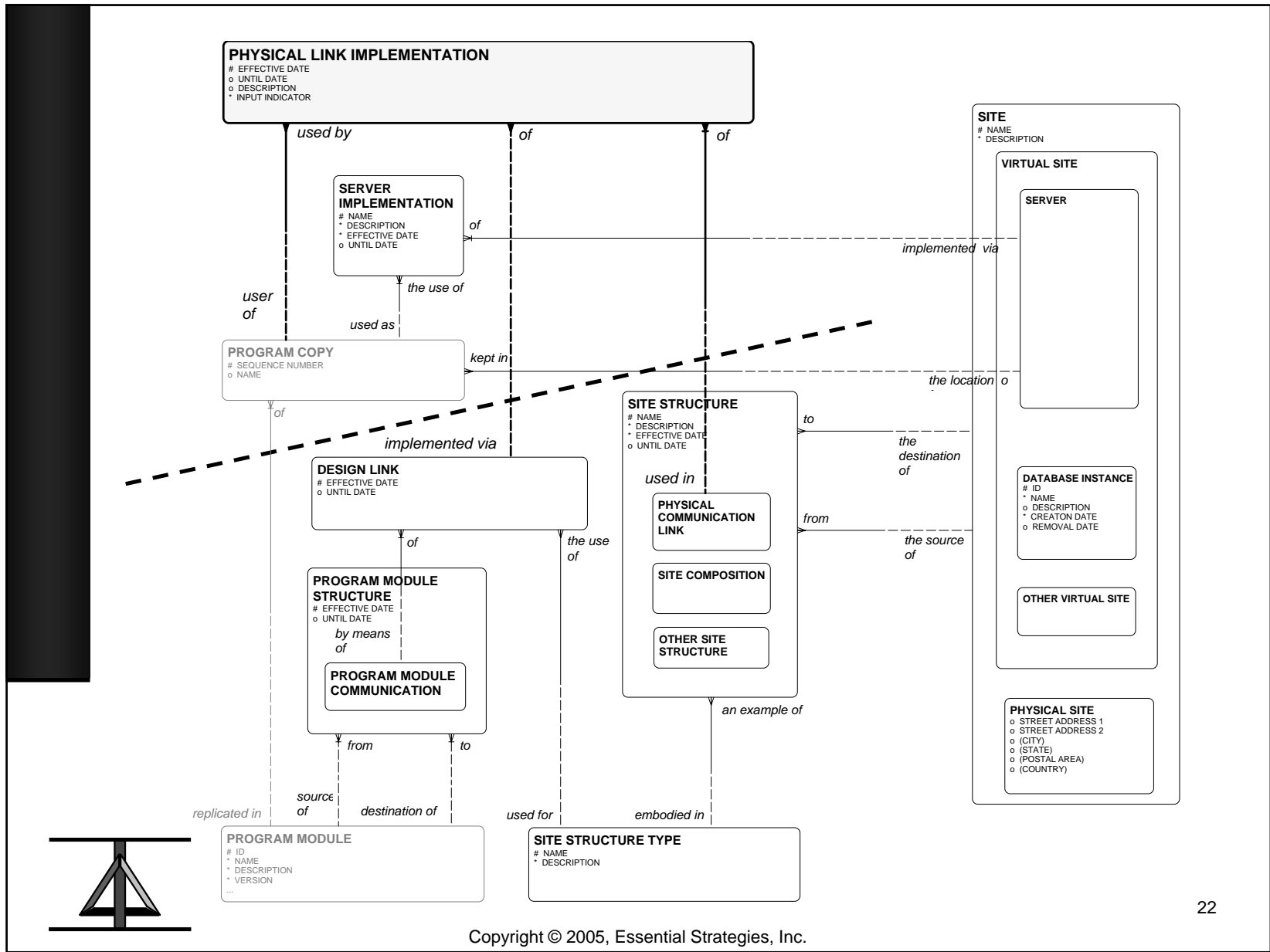
Row six:
The functioning system

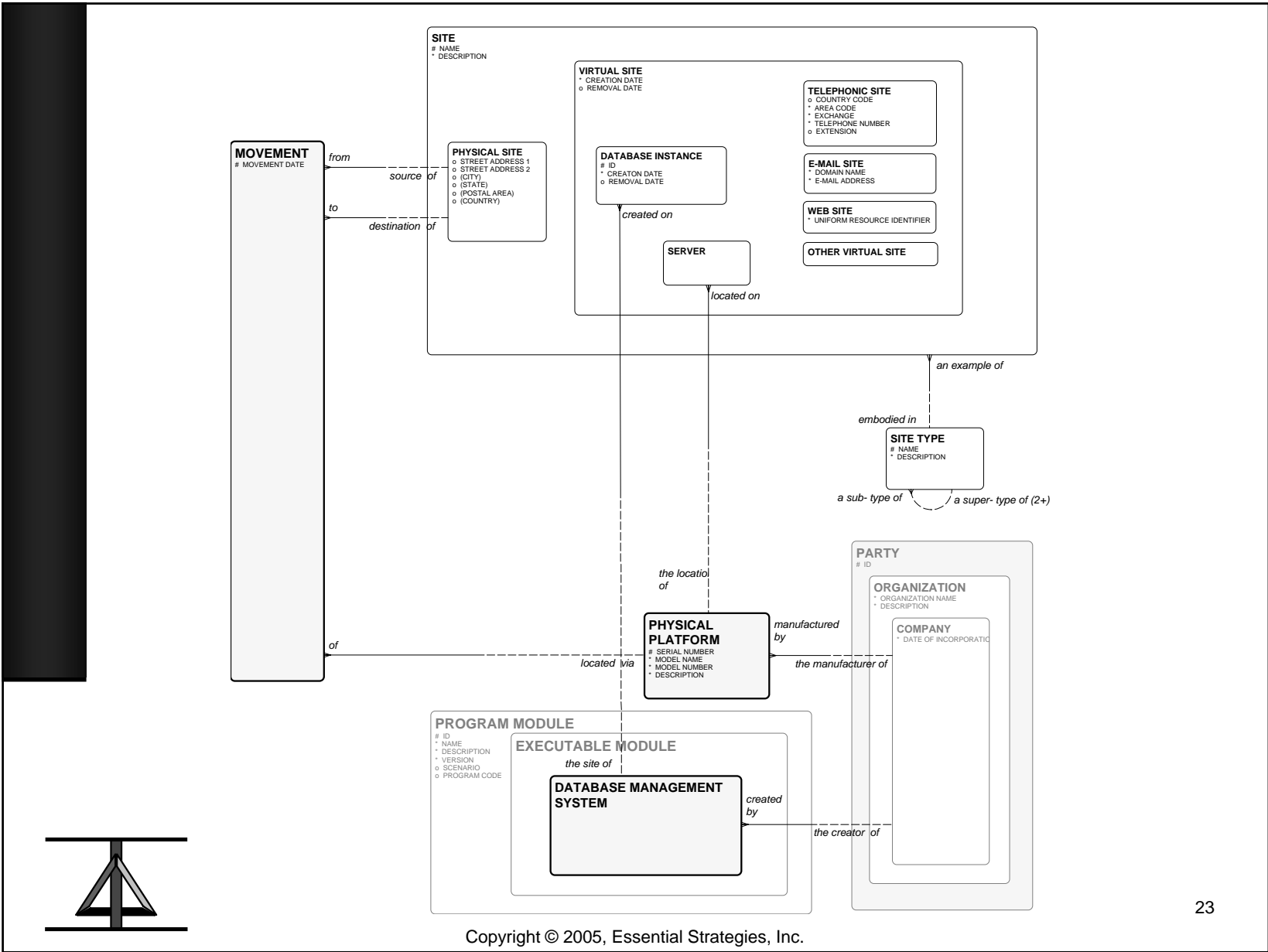












... To be continued ...

