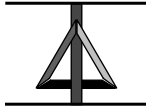


Data Model Patterns: A Metadata Map

East Coast Regional 2006

David C. Hay
May-June, 2006



Essential Strategies, Inc.

13 Hilshire Grove Lane, Houston, TX 77055
☎ (713) 464-8316
✉ dch@essentialstrategies.com
🌐 www.essentialstrategies.com

1

Cats are intended to teach us that not everything in nature has a function.

Unknown

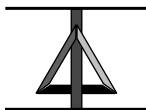
Home computers are being called upon to perform many new functions, including the consumption of homework formerly eaten by the dog.

Doug Larson

The test of a first-rate intelligence is the ability to hold two opposed ideas in the mind at the same time, and still retain the ability to function.

F. Scott Fitzgerald

Column 2: Activities



Essential Strategies, Inc.

13 Hilshire Grove Lane, Houston, TX 77055
☎ (713) 464-8316
✉ dch@essentialstrategies.com
🌐 www.essentialstrategies.com

2

The Architecture Framework . . .

	Data (What)	Activities (How)	Locations (Where)	People (Who)	Time (When)	Motivation (Why)
Objectives / Scope (Planner's view)	List of things important to the enterprise 	List of processes the enterprise performs 	List of enterprise locations 	Organization approaches 	Business master schedule 	Business vision and mission
Enterprise model (Business Owners' Views)	Language, divergent data model 	Business process model 	Logistics network 	Organization chart 	State / transition diagram 	Business strategies, tactics, policies, rules
Model of Fundamental Concepts (Architect's View)	Convergent e/r model 	Essential data flow diagram 	Locations of roles 	The viable system, use cases 	Entity Life History 	Business rule model
Technology Model (Designer's View)	Data base design 	System design, program structure 	Hardware, software distribution 	User interface, security design 	Control structure 	Business rule design
Detailed Representation (Builder's View)	Physical storage design 	Detailed program design 	Network architecture, protocols 	Screens, security coding 	Timing definitions 	Rule specification program logic
Functioning System	<i>(Working System)</i>					
	Converted data	Executable programs	Communications facilities	Trained people	Business events	Enforced rules

3

Copyright © 2005, Essential Strategies, Inc.

Row Two: The business owner's View

4

Copyright © 2005, Essential Strategies, Inc.

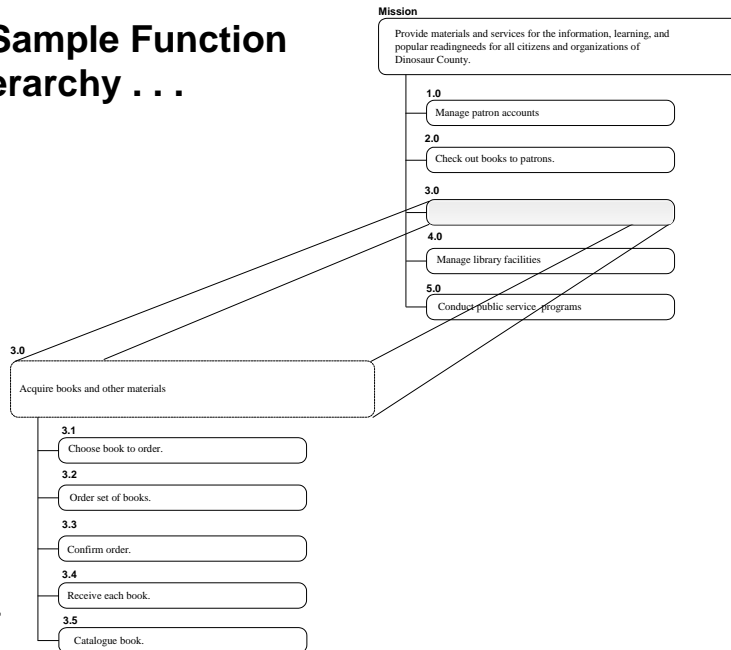
ACTIVITY
 # ID:
 DESCRIPTION:
 DATE ESTABLISHED:
 DATE DISCONTINUED:

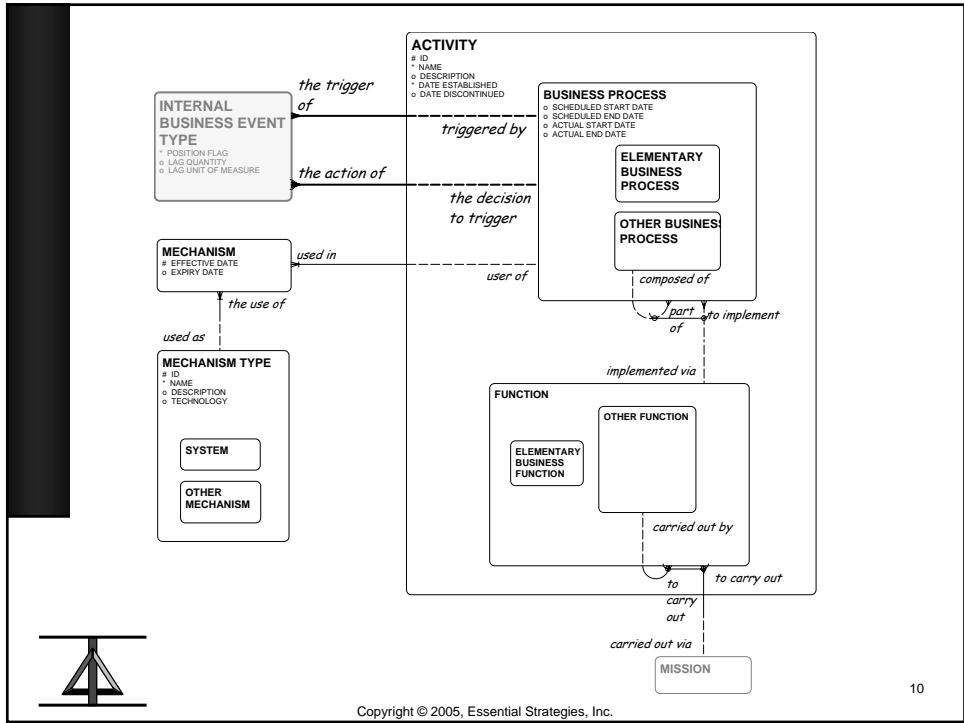
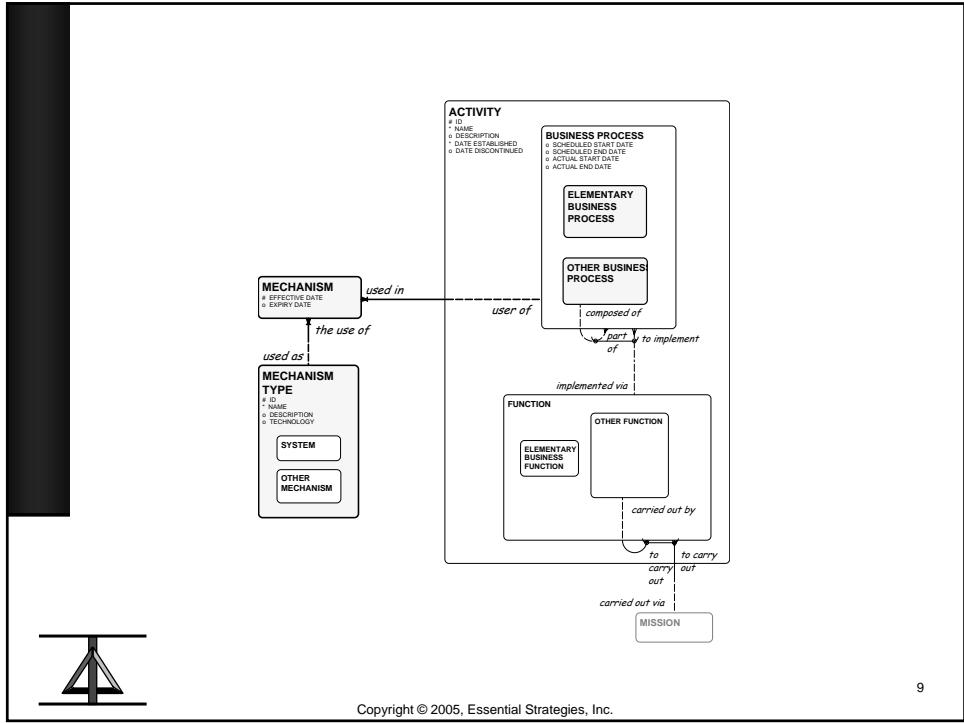
BUSINESS PROCESS
 SCHEDULED START DATE:
 SCHEDULED END DATE:
 ACTUAL START DATE:
 ACTUAL END DATE:

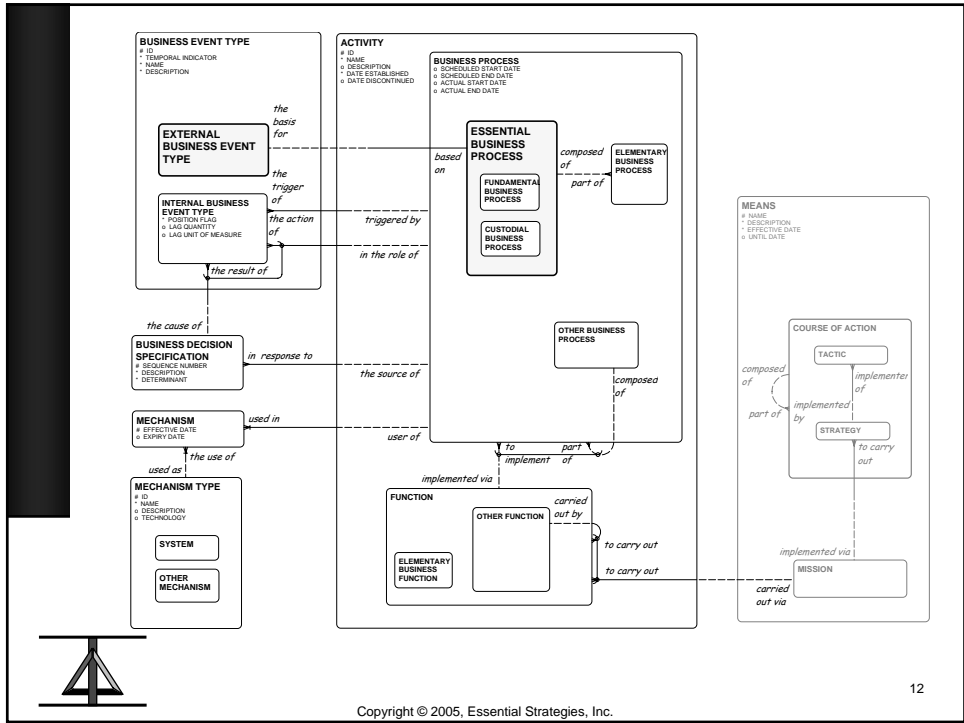
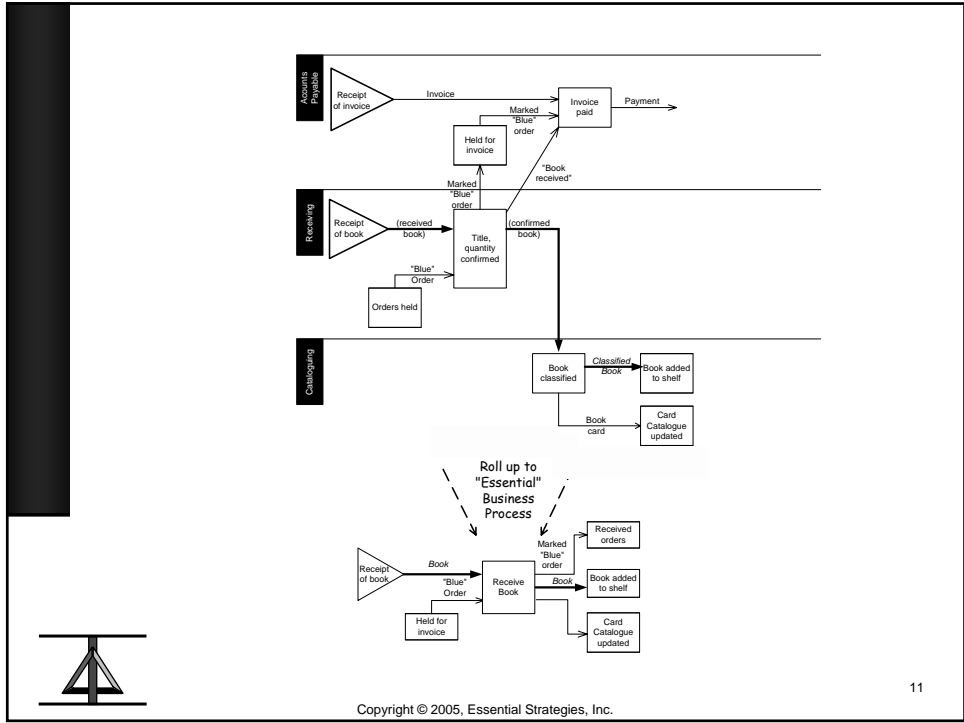
FUNCTION



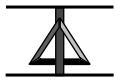
A Sample Function Hierarchy . . .







Row three: The architect's View



BUSINESS PROCESS DESIGN
* EFFECTIVE DATE
o UNTIL DATE

*described
in terms of*

for

used for

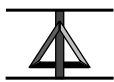
*carried out
via*

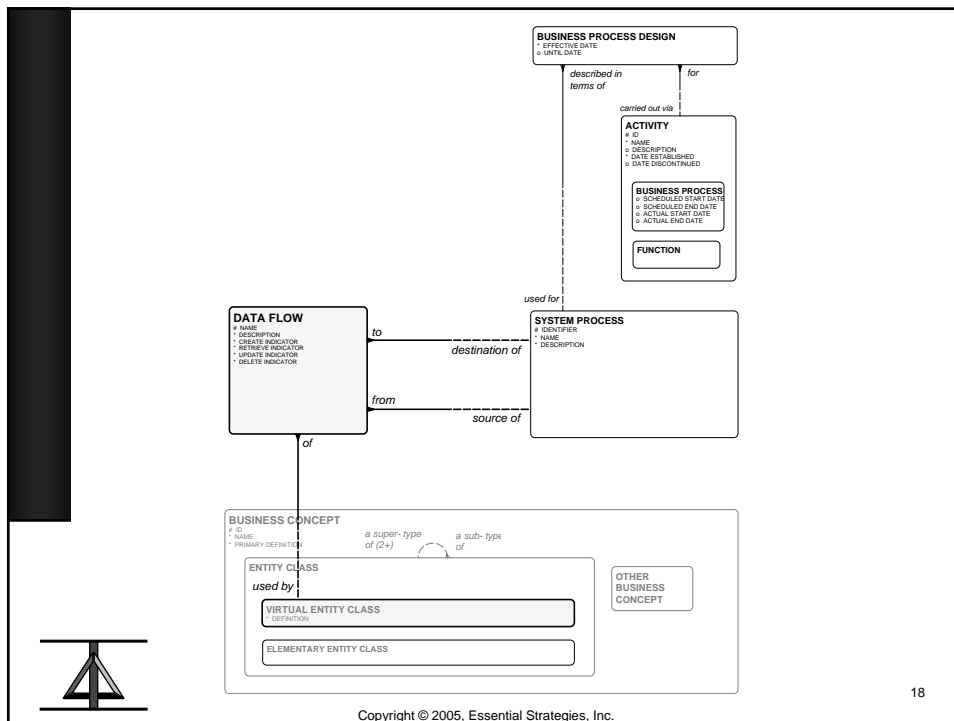
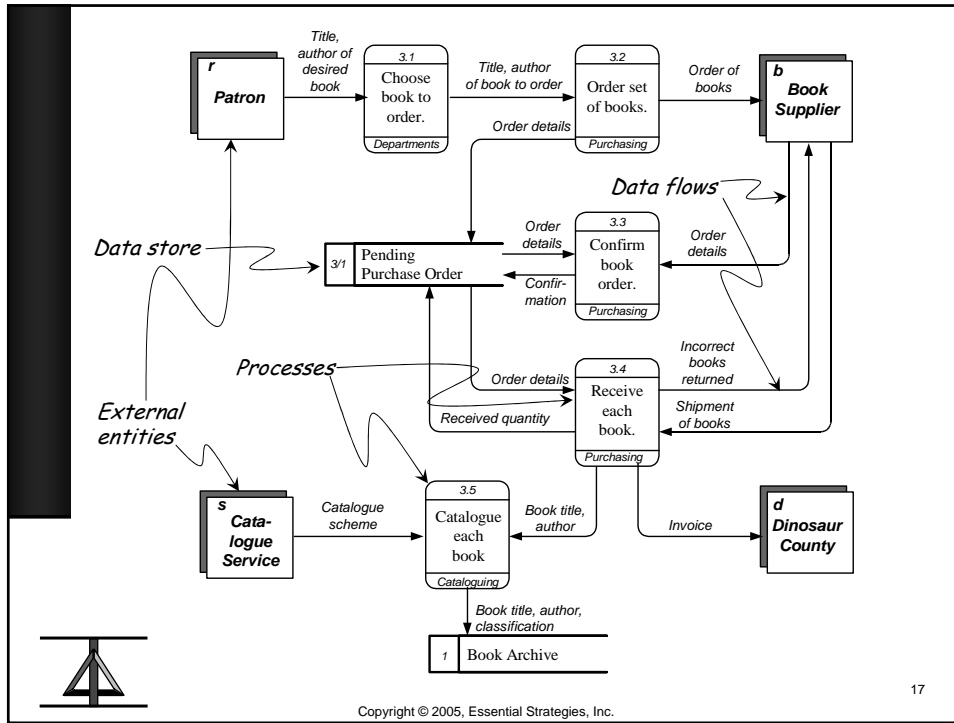
SYSTEM PROCESS
IDENTIFIER
* NAME
* DESCRIPTION

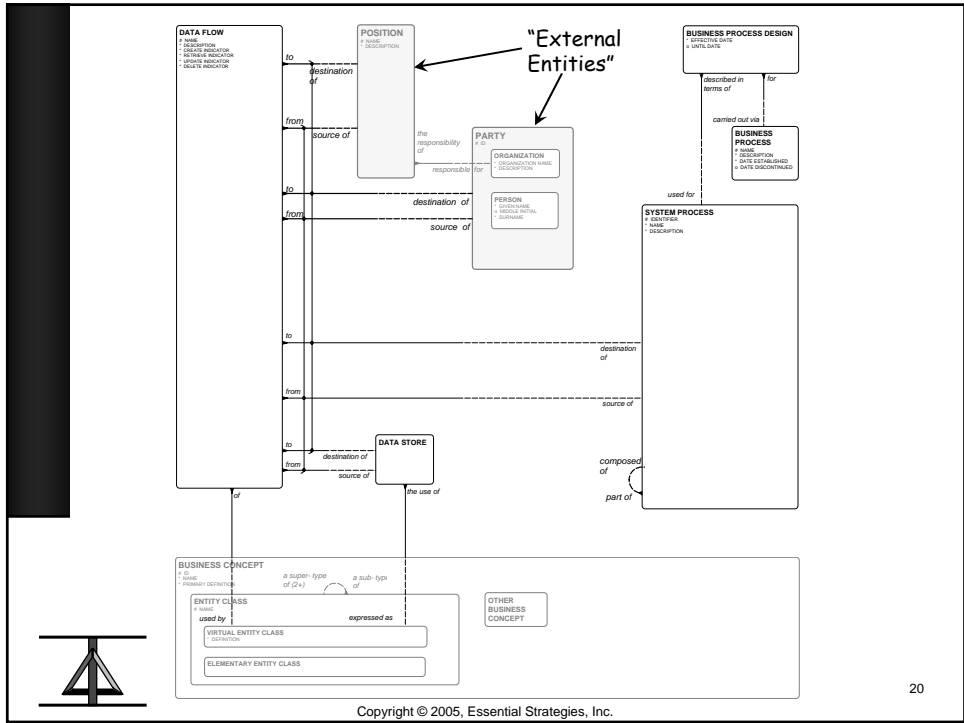
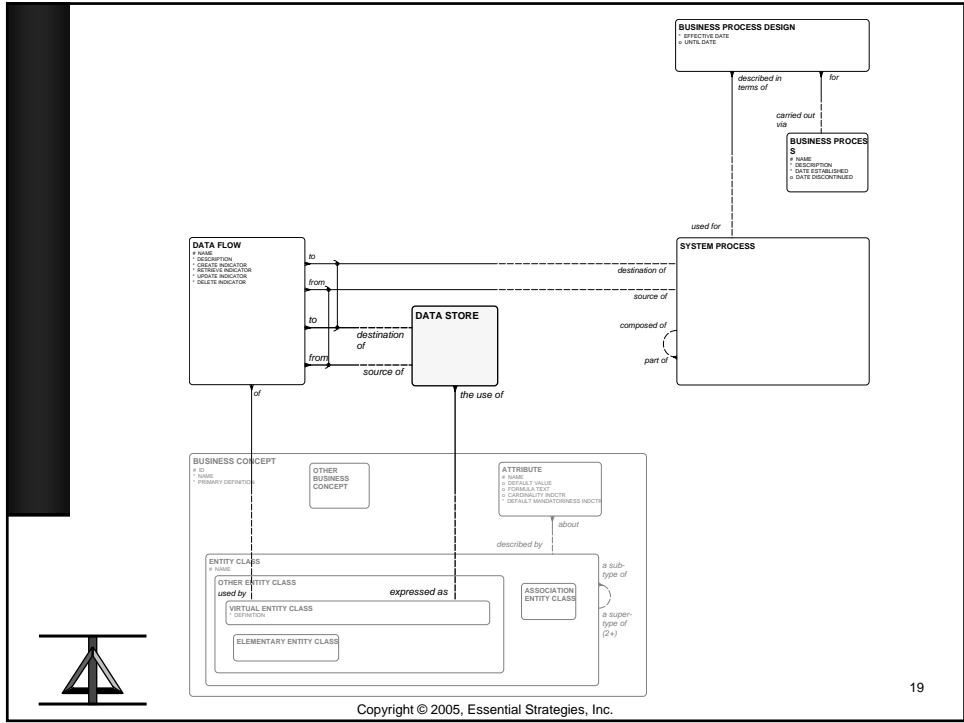
ACTIVITY
ID
* NAME
o DESCRIPTION
* DATE ESTABLISHED
o DATE DISCONTINUED

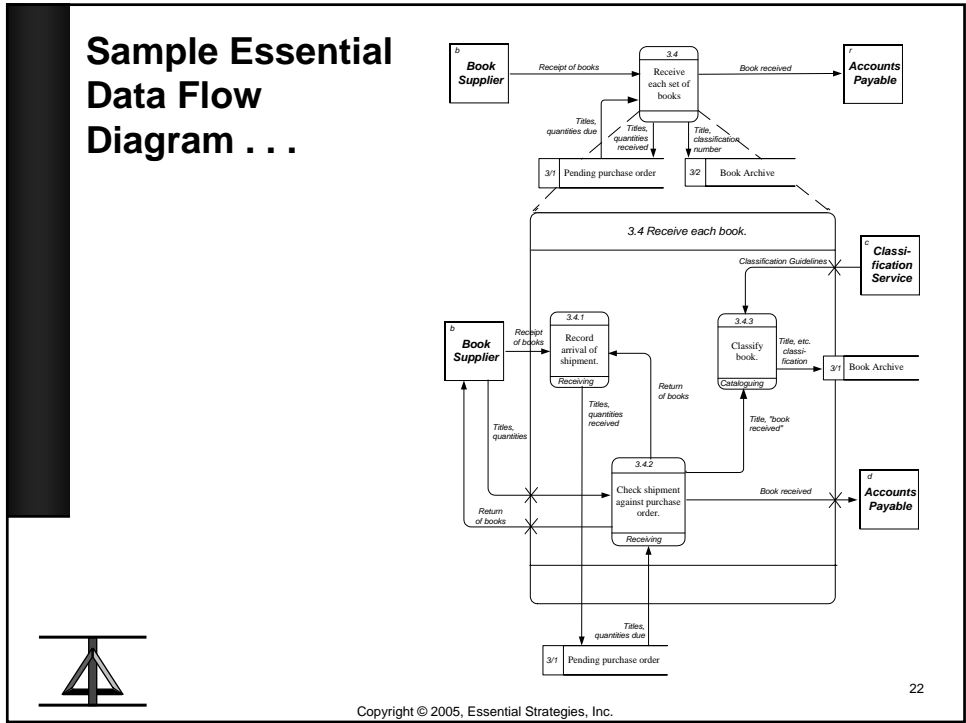
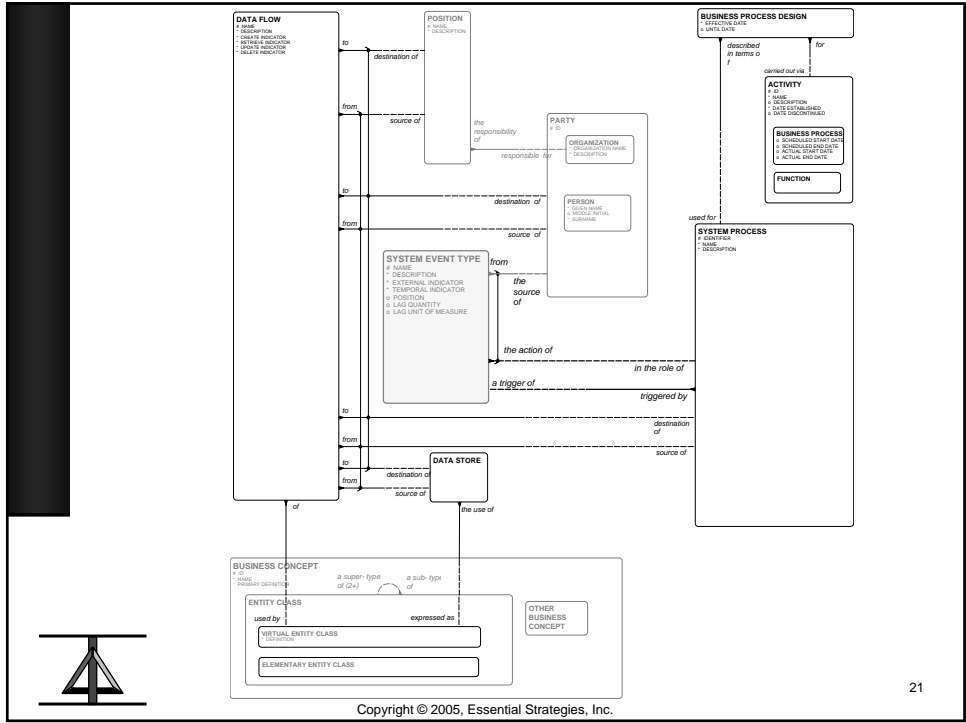
BUSINESS PROCESS
o SCHEDULED START DATE
o SCHEDULED END DATE
o ACTUAL START DATE
o ACTUAL END DATE

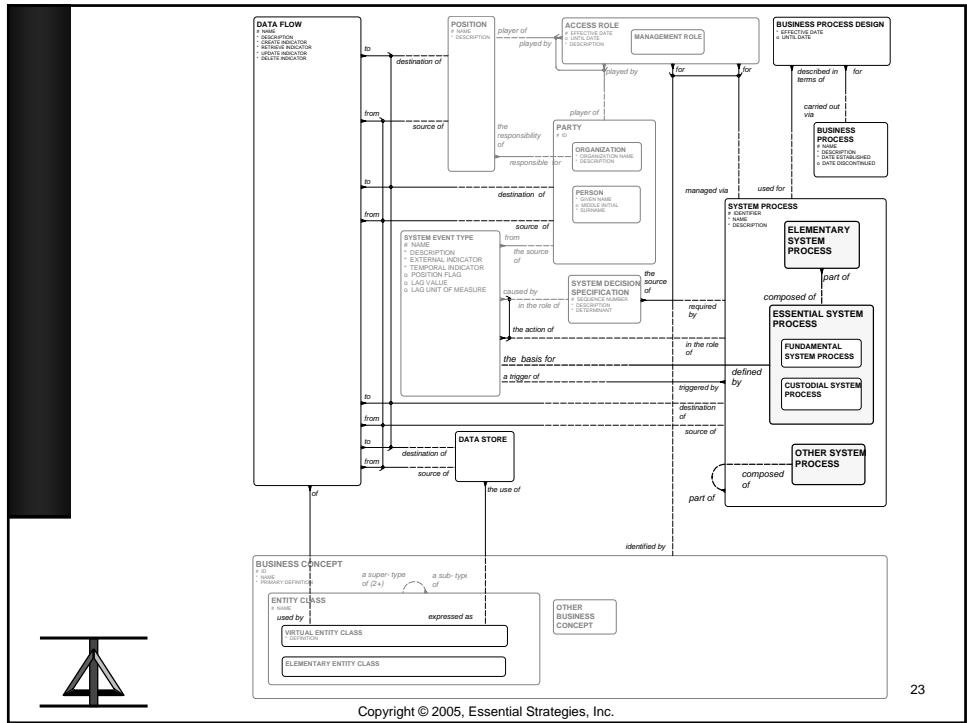
FUNCTION



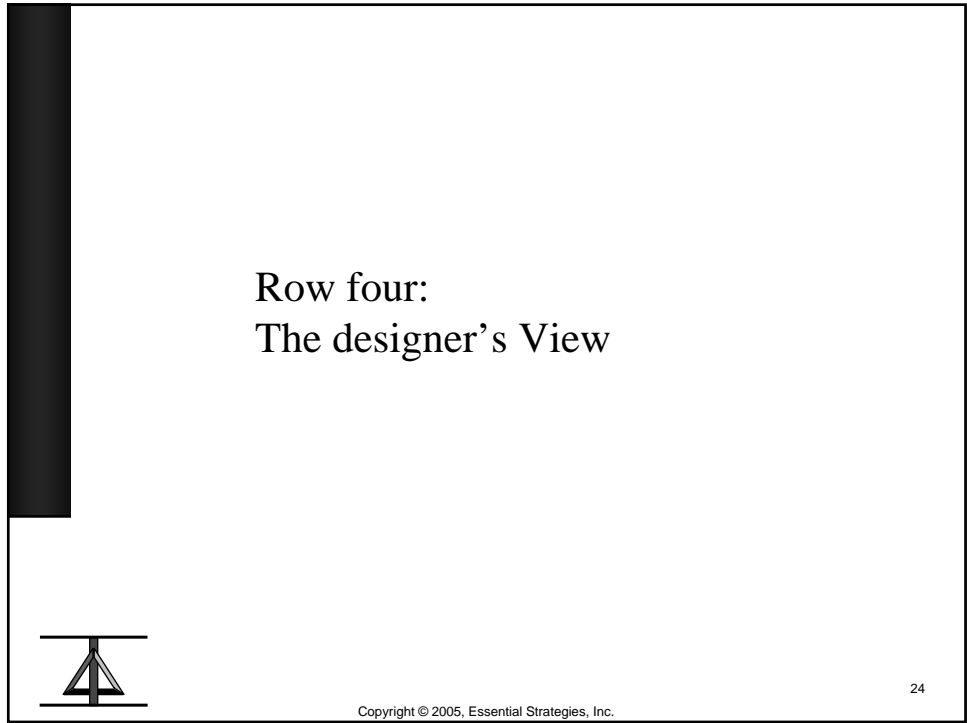


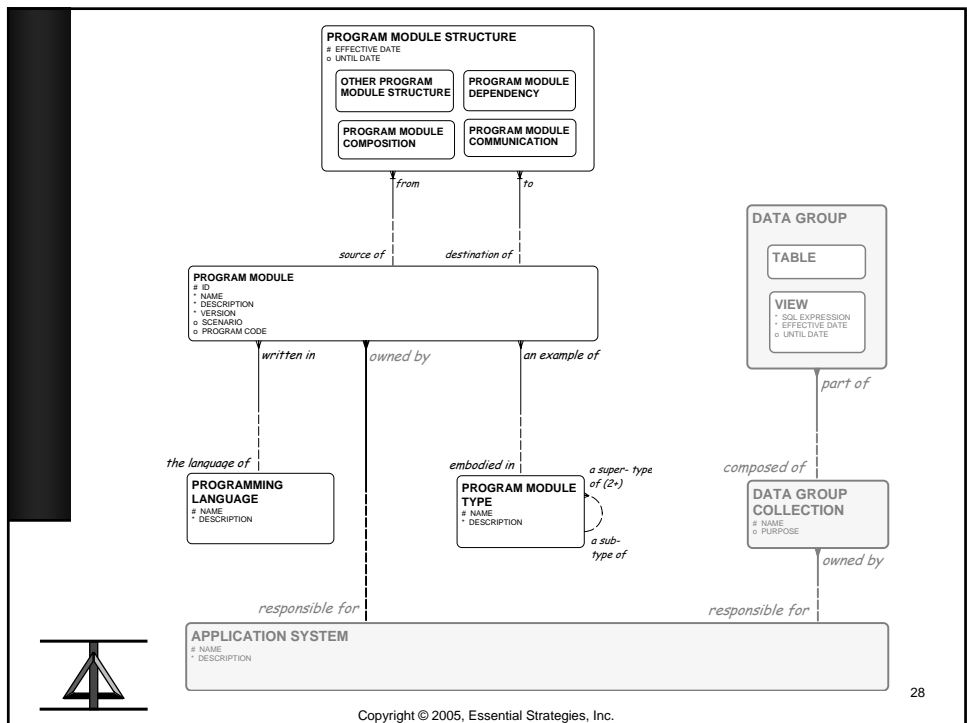
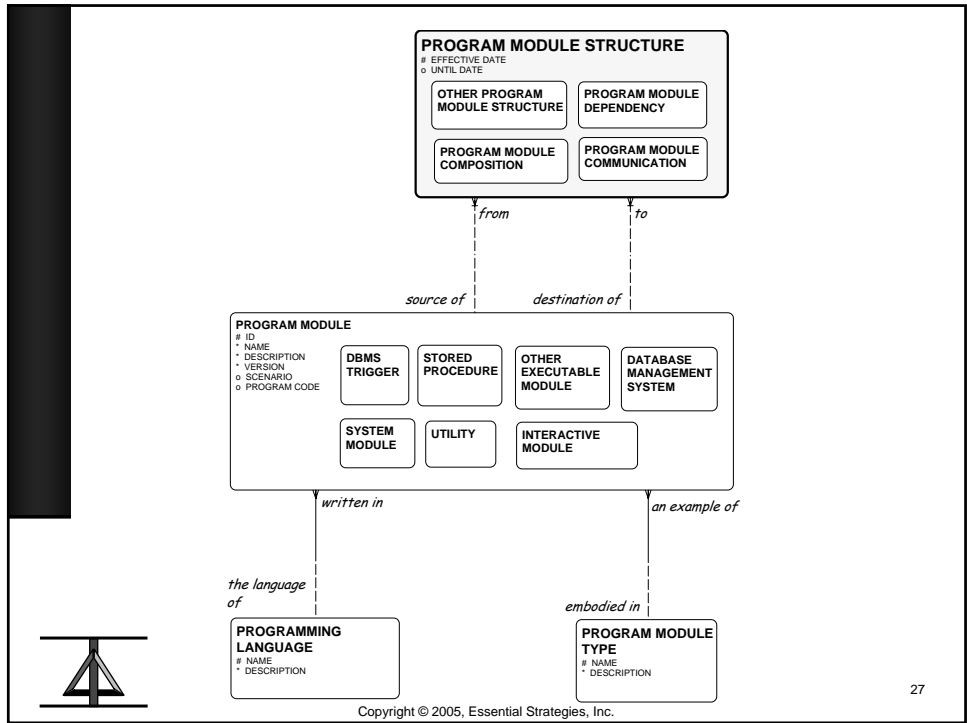


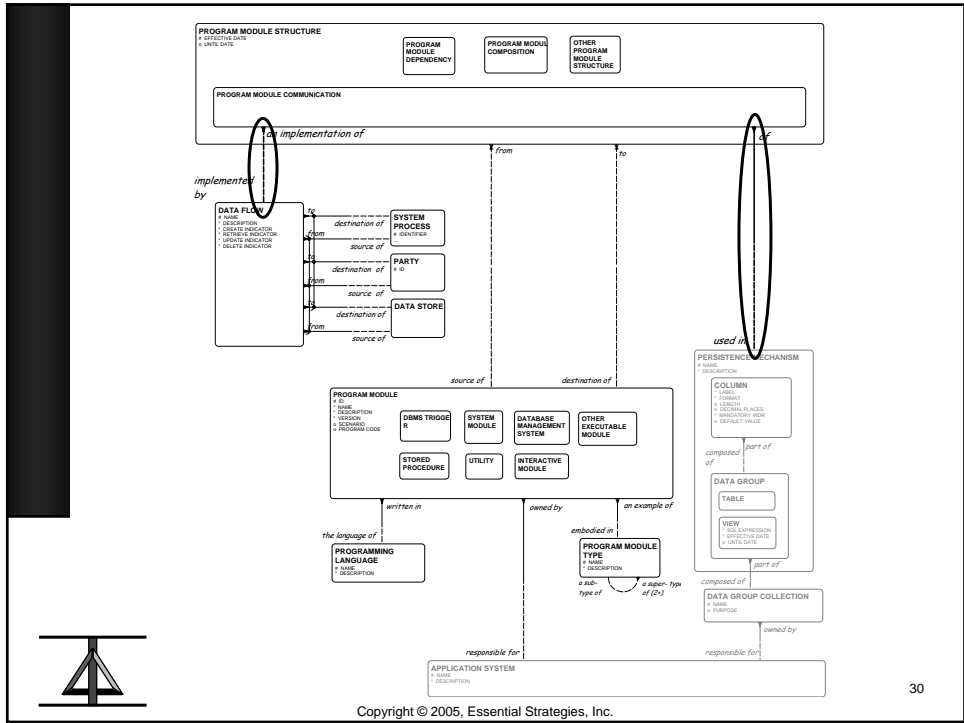
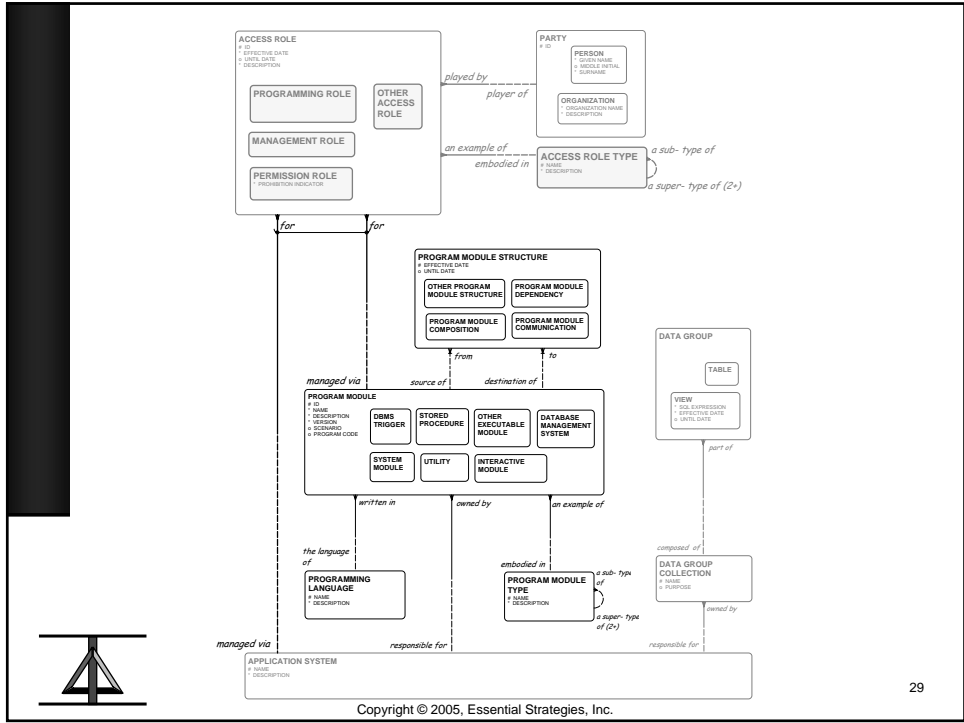


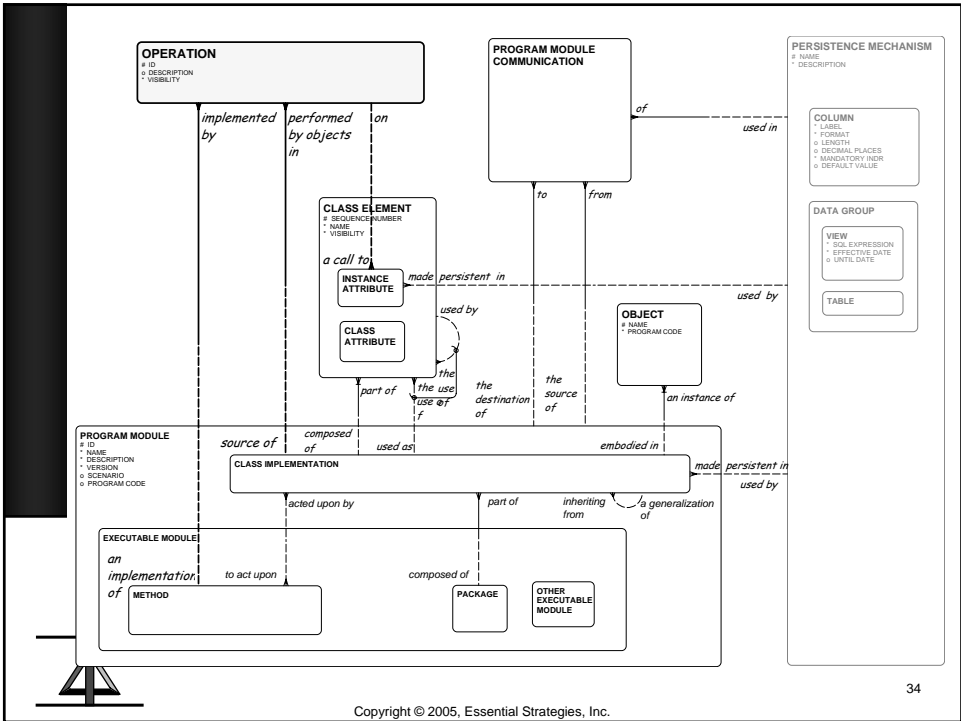
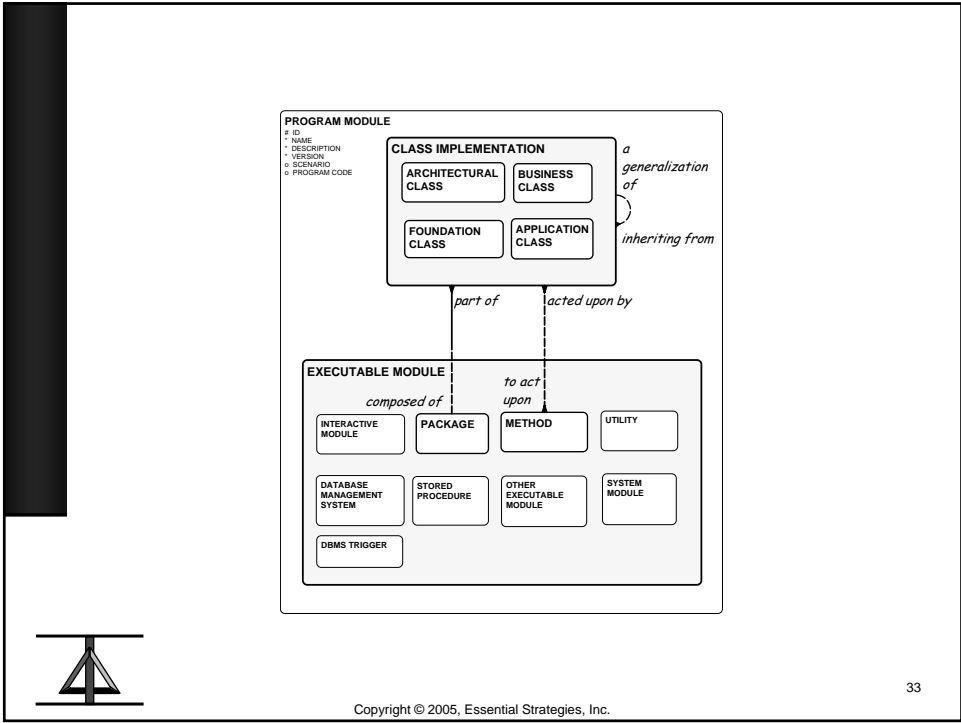


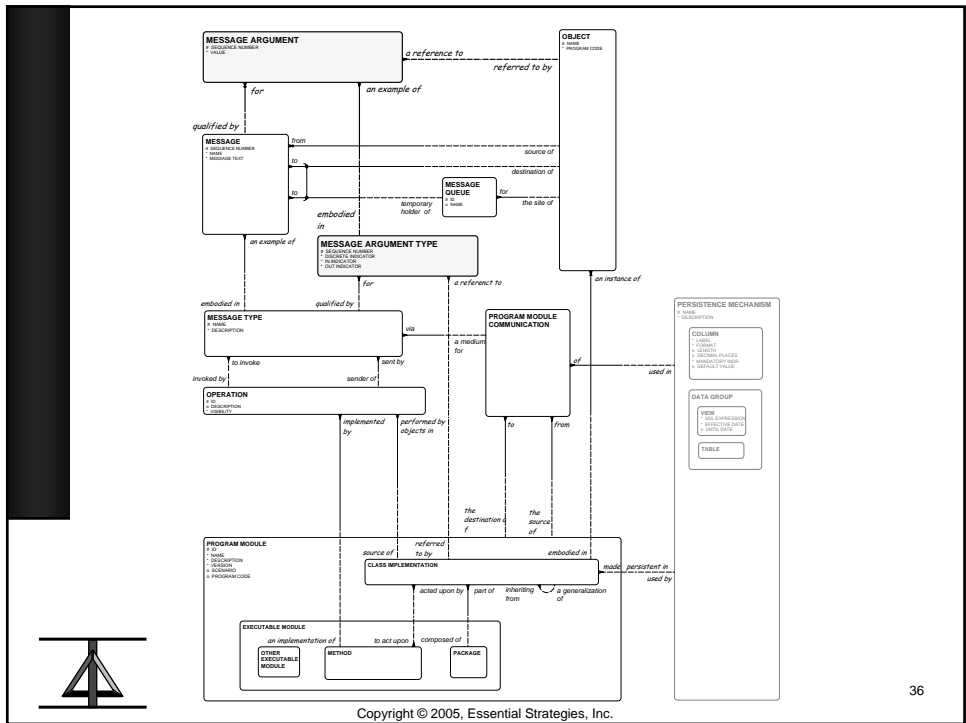
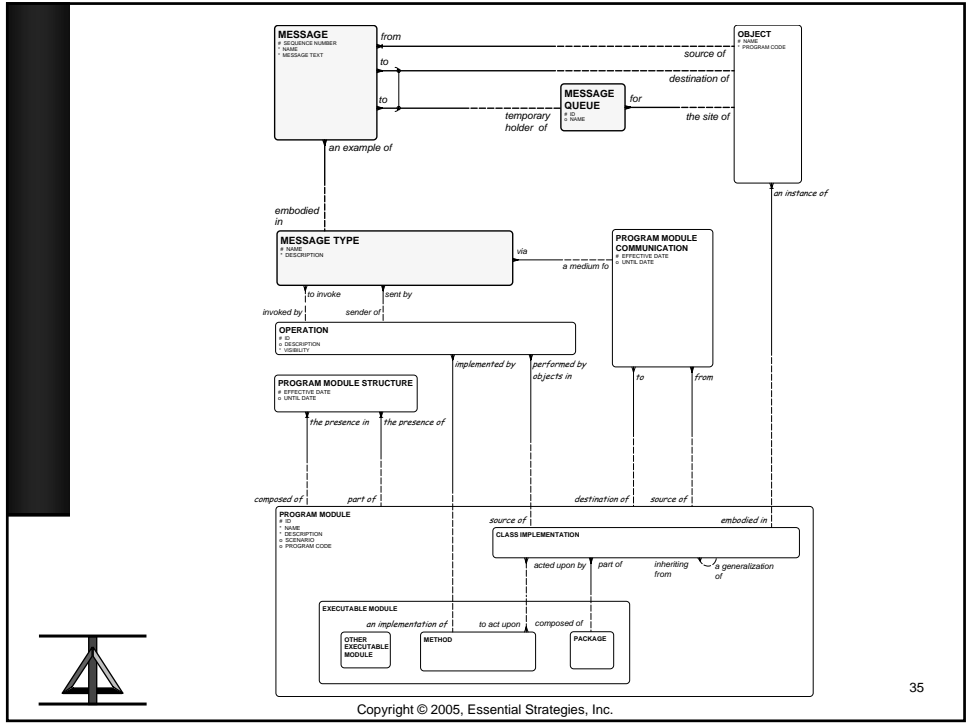
Row four: The designer's View











Row SIX: The FUNCTIONING SYSTEM

